

STAY HOME – STAY HEALTHY – STAY CONNECTED

For more COVID-19 Information from the region, including previous issues of this report, click [here](#).

Published: May 8, 2020

Purpose: The purpose of this report is to provide an update to city officials within Region 22 about the current COVID-19 Pandemic. It is essential to keep in mind that this information often changes rapidly. Any questions, suggestions or concerns can be directed:

Kevin Spencer office: (308) 630-6260 cell: (308) 641-2317
Tim Newman office: (308) 436-6689 cell: (308) 765-2786

COVID-19 Nebraska Cases: As of 4:45 p.m., May 7, 2020. This information is updated daily and can be found by clicking [here](#).

United States Totals

Total cases 1,219,066

Total Deaths 73,297

[Link to US CDC](#)

Nebraska totals

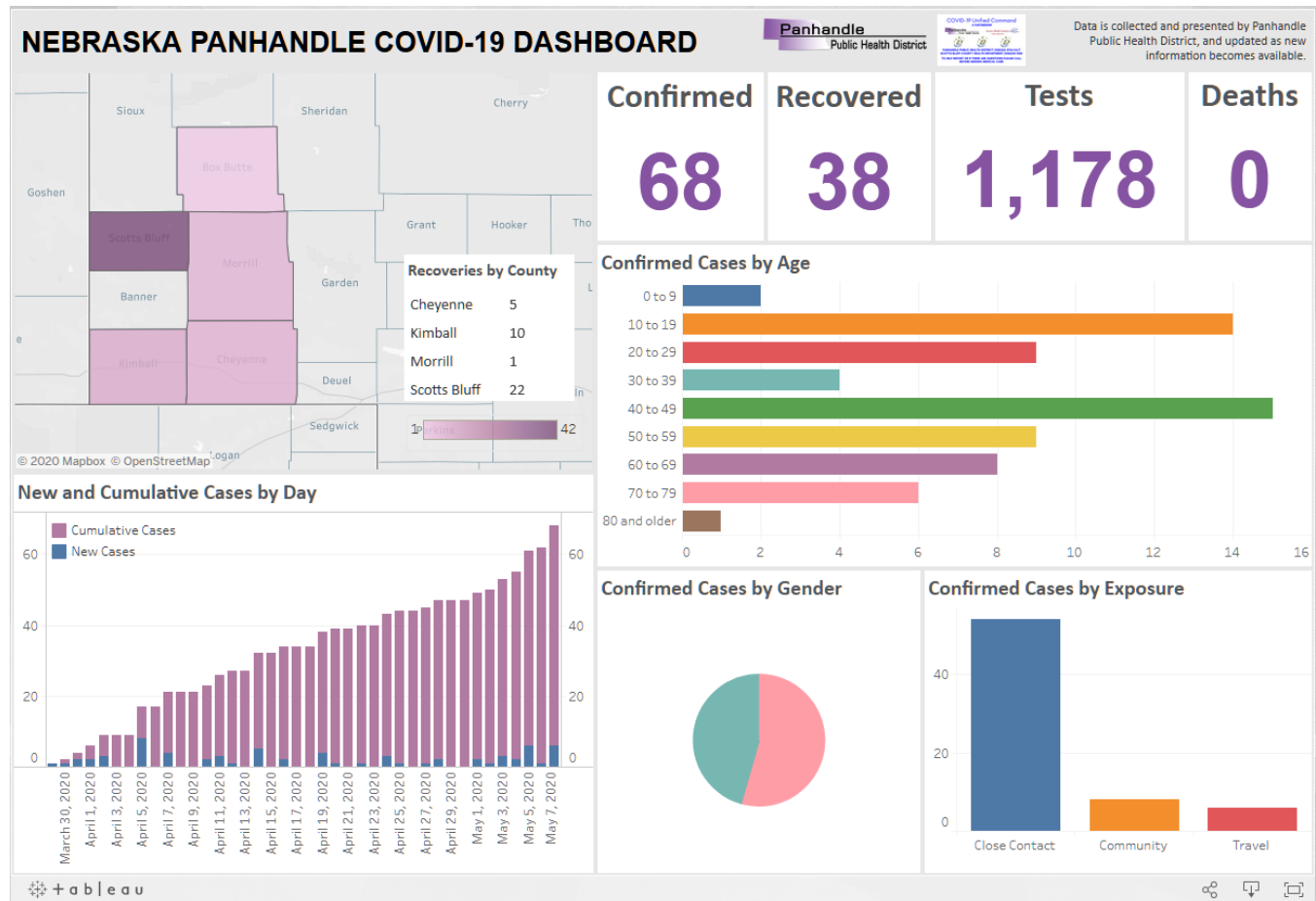
Positive tests 7,190

Negative tests 33,222

Total tested 40,482

Deaths 90

This dashboard is hot-linked to [pphd.org](#)



Panhandle Cases:

Source: [Nebraska Department of Health and Human Services](#)

County	Panhandle	Scotts Bluff	Kimball	Cheyenne	Box Butte	Morrill
Total Tests	1178*	426	88	203	81	82
Negative Tests	1110	391	78	195	80	75
Positive Tests	68	42	10	8	1	7
Deaths	0	0	0	0	0	0
Recovered	38	22	10	5	0	1

* Does not include pending tests.

National Guard testing Returns to the Panhandle This Weekend

Updated Information - Free drive-thru COVID-19 testing is available for those with symptoms or at risk of being exposed. This is not an antibody test. Testing is available for Panhandle residents; minors need to be accompanied by a parent or guardian.

COVID-19 symptoms include cough, fever, shortness of breath, headache, sore throat, chills, muscle pain, or loss of taste or smell.

Use this link to sign up: <https://sugeni.us/cExR> Time slots will become available two days before the testing date. If you need assistance signing up, please call 308-262-5764.

Saturday, May 9

Sidney 8:30a-11a, 2103 Illinois Street: Old Wheatbelt Public Power District building
Oshkosh 2:30p-5p, 115 West 1st Street: City building (South of old fire hall)

Sunday, May 10

Bridgeport 9a-11:30a, 705 M Street: 21st Century Training Center
Alliance 2p-4:30p, 1621 E Kansas St: WNCC Powerline Construction & Maintenance Lab

Monday, May 11

Chadron 9a-11:30a, 355 E Norfolk Avenue: Dawes County Fairground Building
Gordon 2p-4:30p, 1882 US Hwy 20: Gordon Airport (East of town)

Nebraska has been working to increase access by having several teams conduct drive-thru testing in different counties each day. This has already occurred in Kimball County and Scotts Bluff County last month.

Testing is currently limited to 100 people per site. If this does not meet the need, we will request the testing team to come back. These types of drive-thru testing clinics are staffed by trained professionals. There is no charge to be tested through this process.

Panhandle residents do not have to wait for this drive-thru clinic for testing. If you and your provider suspect a COVID-19 infection, your provider can order testing.

Resources:

To find resources from Panhandle Public Health District, click [here](#).

For Wyoming COVID-19 Information, click [here](#).

For Colorado COVID-19 Information, click [here](#).

For South Dakota COVID-19 Information, click [here](#).

To find a Comparison of COVID-19 Loan Programs – Forgiveness Terms click [here](#).

Map of Confirmed COVID-19 Cases in U.S. Counties: [March 1 through Today](#).

Nebraska DHHS COVID-19 information can be found [here](#).

For information on Potential Community Exposure Sites, please click [here](#).

To read the most recent Directed Health Measure (DHM) from the Governor, click [here](#).

The Nebraska Emergency Management Agency Daily Situation Report can be found [here](#). The information on this site is For Official Use Only, not to be shared with the general public.